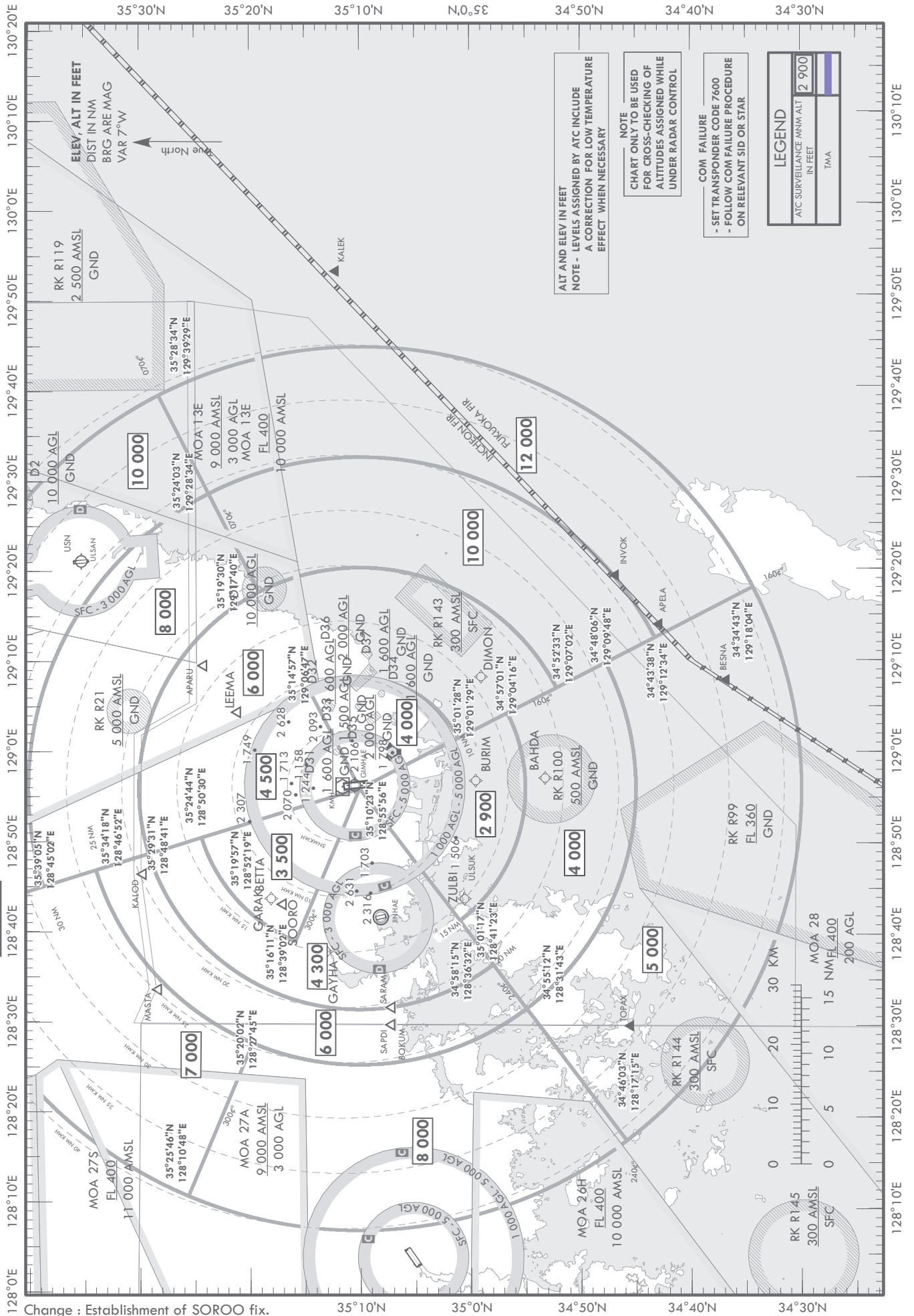


**ATC SURVEILLANCE MINIMUM
ALTITUDE CHART - ICAO**

AERODROME ELEV 13 ft
TRANSITION ALT 14 000 ft

APP 135.7 364.0

BUSAN/Gimhae Intl(RKPK)



ALT AND ELEV IN FEET
NOTE - LEVELS ASSIGNED BY ATC INCLUDE
A CORRECTION FOR LOW TEMPERATURE
EFFECT WHEN NECESSARY

NOTE
CHART ONLY TO BE USED
FOR CROSS-CHECKING OF
ALTITUDES ASSIGNED WHILE
UNDER RADAR CONTROL

COM FAILURE
- SET TRANSPONDER CODE 7600
- FOLLOW COM FAILURE PROCEDURE
ON RELEVANT SID OR STAR

LEGEND	
ATC SURVEILLANCE MIN ALT	2 900
IN FEET	
TMA	

Change : Establishment of SOROO fix.

INTENTIONALLY

LEFT

BLANK